

# CU Series

## Compact 1U Height Switched Power Entry Modules



UL Recognized  
CSA Certified  
VDE Approved‡



Catalog Data Sheet

### CU Series

### Specifications

The CU joins the Corcom family of Power Entry Modules, filling the need for smaller versions of our switched inlet filters. This series provides power entry for equipment designed for popular 1U (1 3/4") height telecom equipment racks. The filtered versions provide complete shielding, shrouded quick connect terminals and basic filtering for 1A to 15A applications, in an extremely compact size.

The modular design is available in snap-in and flanged mounting options. Filtered versions are also available in a new rear mount style which provides a flush appearance with enhanced EMI shielding. The unfiltered inlet snap-in versions are available in three different snap-in configurations to fit a wide variety of panel cut-outs, and with optional jumpering from the socket to the switch. The CU Series accepts common EN 60320 power cords for international compatibility. Refer to the C, GG, P and M Series PEMs for applications requiring additional features.

‡ 15A versions tested by Underwriters Laboratories to US and Canadian requirements and are VDE approved at 10A, 250VAC

#### Maximum leakage current, each line to ground †:

@ 120 VAC 60 Hz	.25 mA
@ 250 VAC 50 Hz	.40 mA
<i>† applies to Filtered versions only</i>	

#### Hipot rating (one minute):

line to ground	1500 VAC
line to line	1450 VDC

**Operating Frequency:** 50 / 60 Hz

**Operating voltages:** 120/250 VAC

**Rated Current:** 1 to 15 Amps

*\* refer to part number for rating*

**Switch:** 50A Inrush SPST

**Output & Switch Terminal Push-on Force:** 15 lb / 67N (max)

#### Minimum insertion loss in dB:

Line to ground in 50 ohm circuit

### Electrical Schematic



Resistor location for reference only

Current Rating	Frequency - MHz						
	.05	.15	0.5	1	5	10	30
1A	19	30	44	49	47	44	45
3A	13	23	37	43	47	44	49
6A	5	14	28	34	43	43	48
10A	1	7	19	25	35	36	52
15A	-	1	10	13	25	27	42

Line to line in 50 ohm circuit

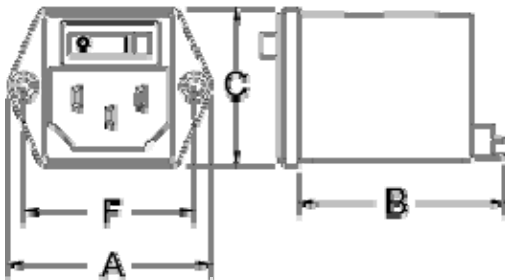
Current Rating	Frequency - MHz						
	.05	.15	0.5	1	5	10	30
1A	1	10	21	26	48	51	60
3A	1	10	20	26	42	45	65
6A	1	10	20	23	38	41	65
10A	1	10	20	23	29	34	56
15A	1	10	20	23	28	39	54

† Applies to Filtered Models only

**Case Styles**

**Case Styles**

**CUFE1**



Typical Dimensions	
Mounting Holes (2)	.132 Dia
	3.35

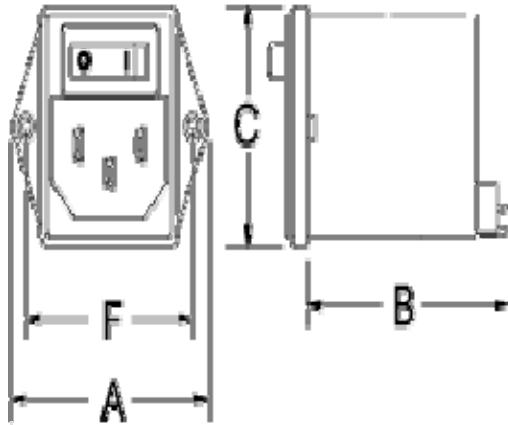
**CUBE1 Pre-Connected Terminals**



**CUBS1 Pre-Connected Terminals**

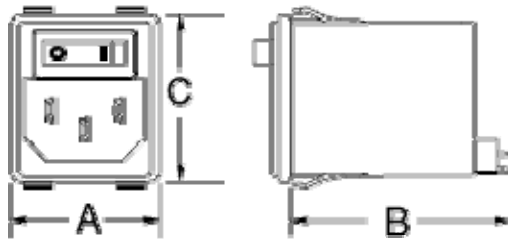
with .260 x 90° countersink  
for #4 Flathead Screw

**CUFF1**



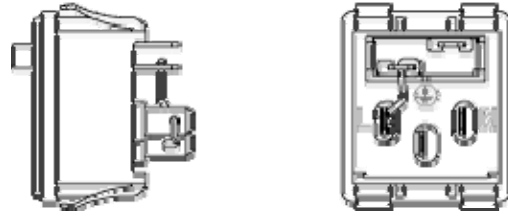
Typical Dimensions	
Threaded Flange Mounting Holes	M3 x 5 (2)

**CUFS1**

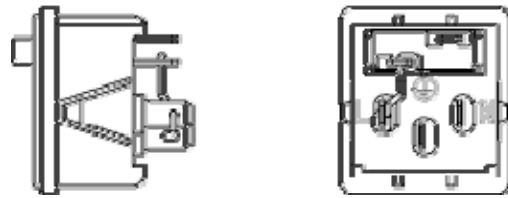


Typical Dimensions			
Output Shroud, Inside:		<u>.21 x .34</u>	
		5.2 x 8.6	
Terminals (3)	<u>.188</u>	Holes (2)	<u>.07 Dia.</u>
	4.8		1.8
Slot	<u>.07 x .16</u>	-	
	1.8 x 4.1		

**CUE1**

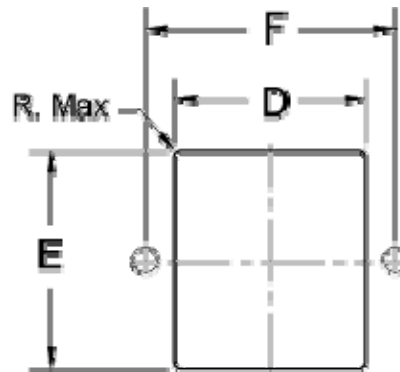


**CU10BS1, CU15BS1 Pre-Connected Terminals**



Switch output terminal configuration may vary

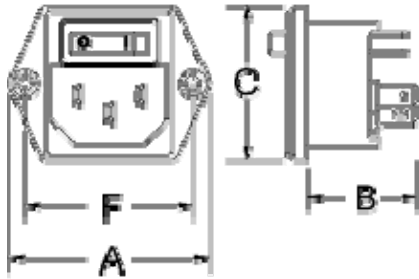
**Recommended Panel Cutout**



Panel Thickness	
CUFS1, CUS1:	<u>.025 - .082</u>
	0.63 - 2.1
CU10S1	<u>.028 - .039</u>
	0.7 - 1.0
CU15S1	<u>.047 - .059</u>
	1.2 - 1.5
CUFF1	<u>.157 Max.</u>
	4.0 Max

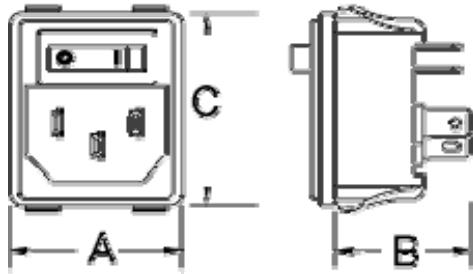
**Case Dimensions**

Part No.	A	B	C	D	E	F
----------	---	---	---	---	---	---

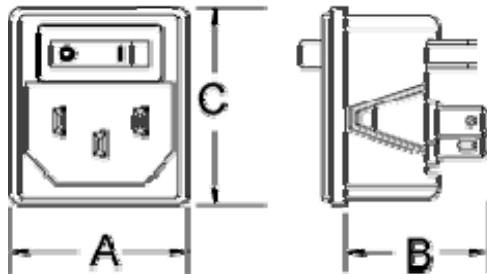


Typical Dimensions	
Mounting Holes (2)	.132 Dia 3.35
	with .260 x 90° countersink for #4 Flathead Screw

### CUE1



### CU10S1, CU15S1



Typical Dimensions			
Terminals (5)	.188	Holes (4)	.07 Dia.
	4.8		1.8
Slot	.07 x .16		-
	1.8 x 4.1		

Switch output terminal configuration may vary

	(max.)	(max.)	(max.)	±.004	±.0	±.0
				±.1	±.1	±.1
CUFE1	<u>1.73</u>	<u>1.75</u>	<u>1.34</u>	<u>1.11</u>	<u>1.26</u>	<u>1.45</u>
	43.9	44.5	34.1	28.1	31.9	36.8
CUFF1	<u>1.7</u>	<u>1.8</u>	<u>1.34</u>	<u>1.21</u>	<u>1.35</u>	<u>1.45</u>
	43.1	45.0	34.1	30.8	34.3	36.8
CUFS1	<u>1.20</u>	<u>1.8</u>	<u>1.34</u>	<u>1.11</u>	<u>1.26</u>	
	30.6	45.0	34.1	28.1	32.0	
CUE1, CUBE1	<u>1.73</u>	<u>.96</u>	<u>1.34</u>	<u>1.06</u>	<u>1.09</u>	<u>1.45</u>
	43.9	24.6	34.1	26.9	27.6	36.8
CUS1, CUBS1	<u>1.20</u>	<u>0.97</u>	<u>1.34</u>	<u>1.04</u>	<u>1.26</u>	-
	30.6	24.6	34.1	26.4	32.0	
CU10S1, CU10BS1	<u>1.20</u>	<u>0.97</u>	<u>1.34</u>	<u>1.05</u>	<u>1.24</u>	
	30.6	24.6	34.1	26.7	31.6	
CU15S1, CU15BS1	<u>1.20</u>	<u>0.97</u>	<u>1.34</u>	<u>1.05</u>	<u>1.24</u>	-
	30.6	24.6	34.1	26.7	31.6	

### Ordering and Design Information

Click on any part number for 3D CAD models, customer drawings, distributor stock status and eCommerce Links. For more information refer to the [Corcom Part Numbering System](#) reference.

Filtered Versions		
<a href="#">1CUFE1</a>	<a href="#">1CUFS1</a>	<a href="#">1CUFF1</a>
<a href="#">3CUFE1</a>	<a href="#">3CUFS1</a>	<a href="#">3CUFF1</a>
<a href="#">6CUFE1</a>	<a href="#">6CUFS1</a>	<a href="#">6CUFF1</a>
<a href="#">10CUFE1</a>	<a href="#">10CUFS1</a>	<a href="#">10CUFF1</a>
Unfiltered Versions		
<a href="#">15CUE1</a>	<a href="#">15CUBE1</a>	<a href="#">15CUS1</a>
<a href="#">15CUBS1</a>	<a href="#">15CU10S1</a>	<a href="#">15CU10BS1</a>

		<a href="#">15CU15S1</a> <a href="#">15CU15BS1</a>
USA Customer Service:	1-800-468-2023	<i>Dimensions are in inches and millimeters unless otherwise specified. Values in italics are metric equivalents. Dimensions are shown for reference purposes only. Specifications subject to change.</i>
Corcom Products Direct:	1-847-680-7400	
Germany:	49-89-6089-0	